

2803/205

CLOTHING CONSTRUCTION II

PRACTICAL

Oct./Nov. 2021

Time: 6 hours



THE KENYA NATIONAL EXAMINATIONS COUNCIL

DIPLOMA IN FASHION DESIGN AND CLOTHING TECHNOLOGY

MODULE II

CLOTHING CONSTRUCTION II PRACTICAL

6 hours

INSTRUCTIONS TO CANDIDATES

1. *You should have the following for this examination:*
 - (i) *plain medium weight fabric $1\frac{1}{4}$ metres long by 152 cm wide;*
 - (ii) *fusible interfacing 60 cm by 48 cm;*
 - (iii) *one button 1.5 cm diameter without a shank;*
 - (iv) *thread to match the fabric;*
 - (v) *sewing tools;*
 - (vi) *brown papers;*
 - (vii) *one large envelope.*

2. *At the end of the examination:*
 - (a) *stitch on a label bearing your name and index number on a single layer of fabric without concealing any details;*
 - (b) *enclose the garment in the large envelope provided.*

This paper consists of 2 printed pages.

Candidates should check the question paper to ascertain that both pages are printed as indicated and that no questions are missing.

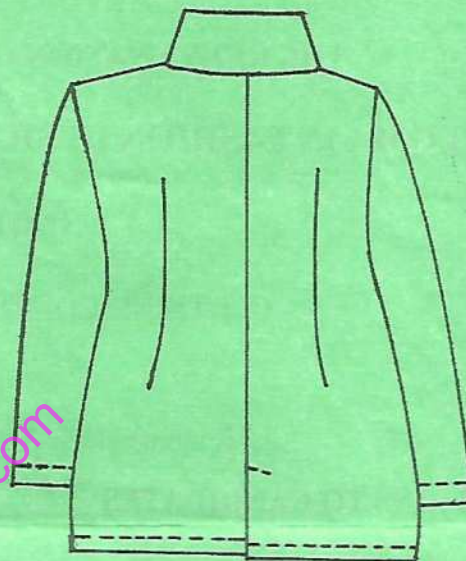
TASKS

Using the measurements and the materials provided, cut out and make the garment style sketched below as follows:

- (a) use double stitched seams at the sides and the underarms;
- (b) make one buttonhole at the break point and sew on the button.



FRONT VIEW



BACK VIEW

Measurements

chest	-	73 cm	wrist	-	15.2 cm
waist	-	66 cm	scye depth	-	18 cm
hip/seat	-	76 cm	back neck to waist	-	33.6 cm
across back	-	30.4 cm	sleeve length	-	48 cm
neck size	-	32 cm	full length	-	55 cm
shoulder	-	11 cm	sleeve width	-	28 cm

THIS IS THE LAST PRINTED PAGE.